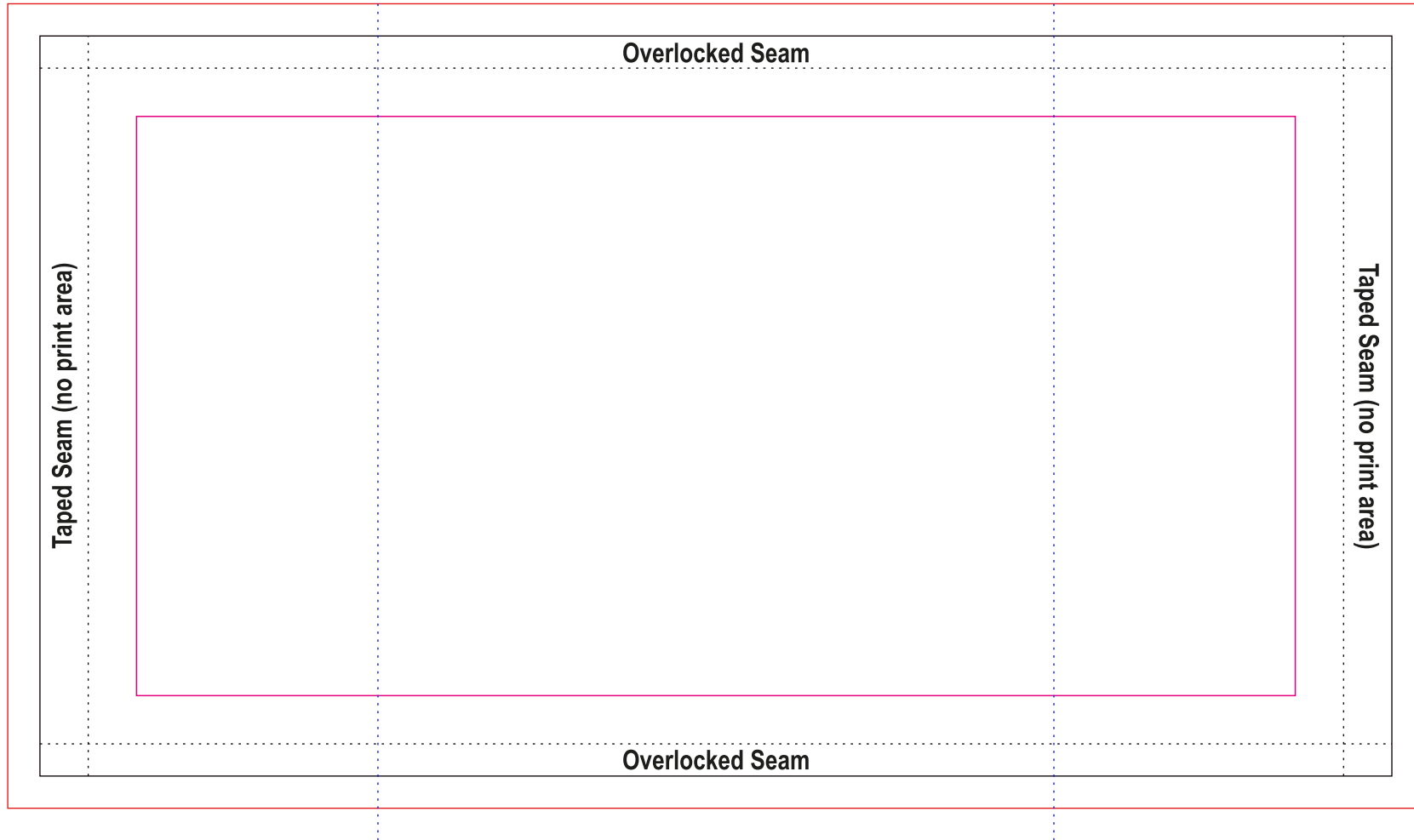


Blue dotted line - opposing centres



**Red line** - full bleed area (required)

**Black line** - maximum print area

**Pink line** - safe print area (please include all critical text and images within)

Overall artwork size (incl. bleed) - 220mmW x 125mmH

Visually printed area of finished product (incl. all seam areas) - 210mmW x 115mmH

Maximum area for critical text and logos - 180mmW x 90mmH

Please note, stubby coolers are manufactured using a sublimation process. This process uses high pressure and heat which may impact the finished artwork. Some tips to achieve the best outcome include:

- avoid fine lines that may bleed
- dominant horizontal and verticals that may skew during production
- white backgrounds that can show imperfections
- subtle watermarks that may not contrast

If you have any concerns, please contact us and we would be happy to run a test print

